

**JUST BEFORE
THE EXAM!**

Number Rules Extract & Review



Check frequently asked questions!

This will help you remember what you studied just before taking the exam.



0.5m

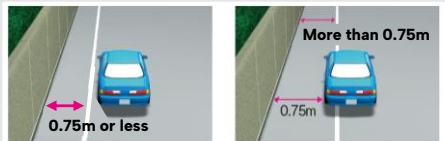
Stage1 Lesson4



When driving on roads lacking a sidewalk or side strip, automobiles (other than two-wheeled vehicles) must not drive on the shoulder (the part of the road within **0.5 meters** of the edge).

0.75m

Stage2 Lesson11

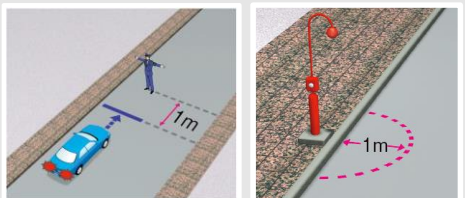


When there is a side strip and the width of the side strip is **0.75 meters** or less, align the vehicle with the left edge of the roadway.

When the width of the side strip exceeds **0.75 meters**, enter the side strip and leave **0.75 meters** or more of space on the left side of the vehicle for pedestrians to pass through.

1m

Stage1 Lesson2
Stage2 Lesson11



Correct Position to Stop Vehicle

If there is no intersection, pedestrian crossing, bicycle crossing, or grade crossing...

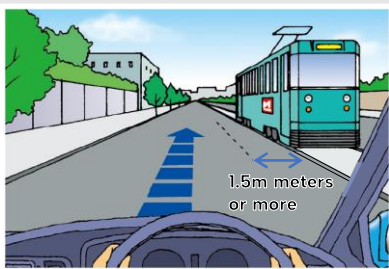
Stop **1 meter** before the police officer or traffic warden

Locations Where Parking Is Prohibited

Within **1 meter** of a fire alarm

1.5m

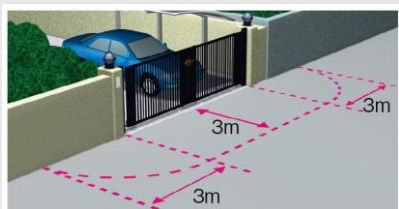
Stage1 Lesson8



When there is no safety zone but no people are getting on or off and a space of **1.5 meters** or more can be created between one's vehicle and the streetcar. (Slow down)

3m

Stage2 Lesson11

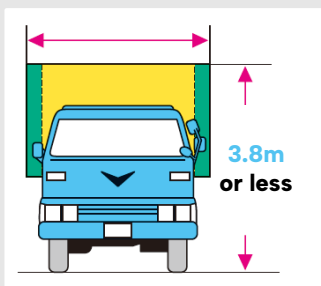


Locations Where Parking Is Prohibited

Within **3 meters** of the entrance to a parking lot, garage, or similar

3.8m

Stage2 Lesson12



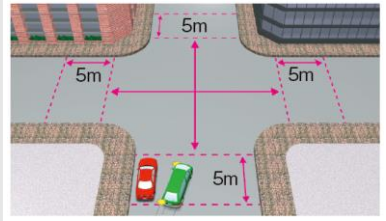
Height restrictions of loading methods of automobiles (except Motorcycles and Special Light Equipment) (**3.8 meters**)

5m

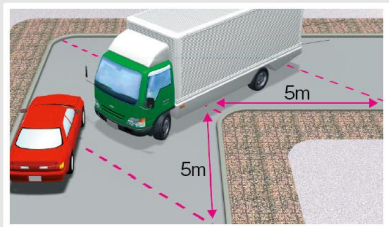
Stage2 Lesson11

Locations Where Parking and Stopping Are Prohibited

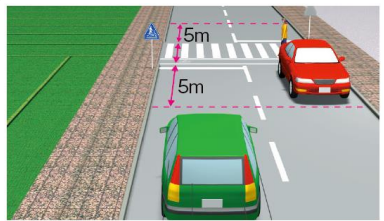
- Inside intersections and areas within **5 meters** of the edge of an intersection



- Areas within **5 meters** of a corner



- Inside pedestrian and bicycle crossings and areas within **5 meters** of the front or rear edge of a pedestrian and bicycle crossing

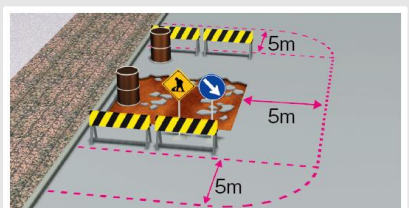


5m

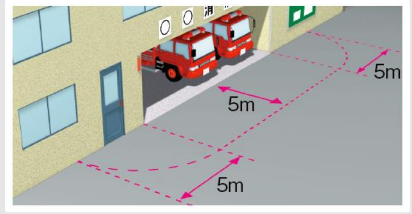
Stage2 Lesson11

Locations Where Parking Is Prohibited

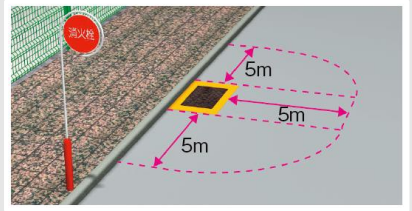
- Within **5 meters** from the edge of a road construction site



- Within **5 meters** of a firefighting water tank or a place where firefighting equipment is stored, or of an entrance close to the road

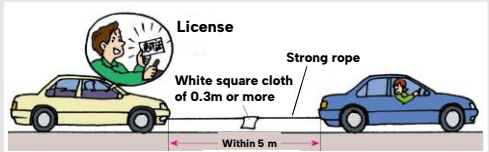


- Within **5 meters** of a fire hydrant, a sign indicating the presence of a designated firefighting water supply, or the inlet port of a firefighting water tank



5m

Stage2 Lesson13



How to Tow a Broken-down Vehicle Without Raising its Wheels

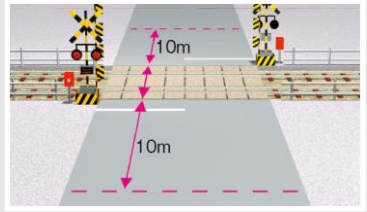
A strong rope or similar must be tied securely between the towing vehicle and the vehicle being towed (or if two vehicles are being towed, from one vehicle to the next) keeping them at a safe distance from one another (within **5 meters**), and a white square cloth (0.3 meters or more) must be attached to the rope.

10m

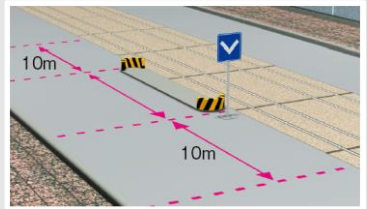
Stage2 Lesson11

Locations Where Parking and Stopping Are Prohibited

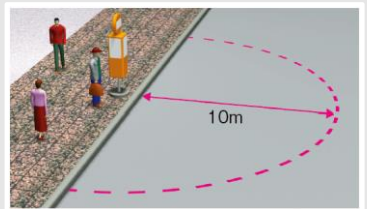
- Inside railway crossings and areas within **10 meters** of the front or rear edge of a railway crossing



- On the left side of a safety zone and areas within **10 meters** of the front or rear of the left side of a safety zone

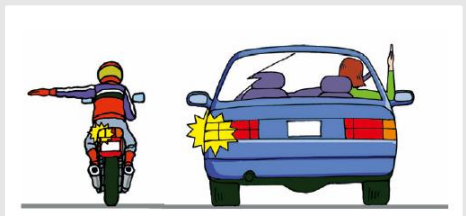


- Within **10 meters** of the signboard (marker post) of a bus stop or streetcar stop (Only applies during business hours.)



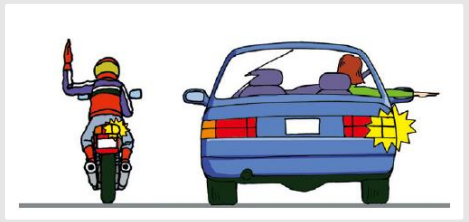
30m

Stage1 Lesson9



Timing of Signal

- **30 meters** before reaching the point (or at an intersection) where the left turn will be made.



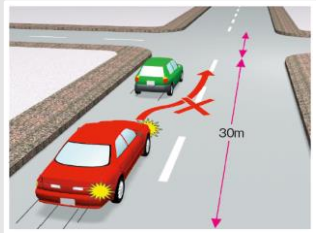
- **30 meters** before reaching the point (or at an intersection) where the right turn or U-turn will be made.

30m

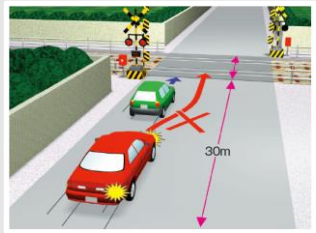
Stage1 Lesson11

Place Where Overtaking is Prohibited

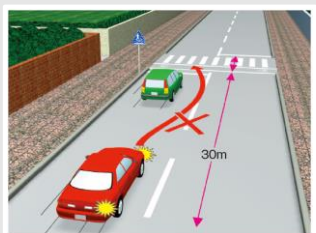
- At an intersection or within **30 meters** of one (except when there is a right of way)



- At a railway crossing or within **30 meters** of one



- At a pedestrian crossing or bicycle crossing or within **30 meters** of one



Interpretation of Numerical Expressions as Used in this Book

- ① **XX or more** : Includes the value stated and those larger.
(Example) 5 or more = 5,6,7...
- ② **XX or less** : Includes the value stated and those smaller.
(Example) 5 or less = 5,4,3...
- ③ **More than XX** : Includes values larger than but excepting that stated.
(Example) More than 5 = 6,7,8...
- ④ **Less than XX** : Includes values smaller than but excepting that stated.
(Example) Less than 5 = 4,3,2...

What you need to know to prepare for and take the exam

- Go to bed early the night before to get in the best shape for the day
- Check again before you leaving home for forgotten items
(Required documents, writing utensils, wallet, Glasses etc.)
- The meeting time must be strictly observed
Please note that if you are even one minute late, you will not be able to take the exam
- Review what you learned just before the exam
- If you don't know the answer to a question, mark it for later use
- Please double check your answer sheet before submitting it



~ Please take the exam calmly. Do your best, good luck! ~
from your driving school